



PORT OF BENTON





Marketing the Community

PORT OF
BENTON

HOME BUSINESS WITH US ▾ REAL ESTATE ▾ PROPERTIES & FACILITIES ▾ ABOUT THE PORT ▾

Why Port of Benton?



Unequaled Location

Our communities are centrally located between Seattle, Spokane, Portland and Boise, providing easy access to major U.S. markets.



Strong Economy

The Tri-Cities is the third-largest metro area in the state with major economic drivers, including agriculture, value-added ag, clean energy, science, technology, research, advanced manufacturing and tourism.



Skilled Workforce

The Tri-Cities has the second-highest percentage of technology jobs per 1,000 in the state and is home to more than 1,500 PhDs and 7,000 engineers and scientists.



Reliable, Low-Cost Energy

In Washington, industrial energy rates are 38.1% lower than the U.S. average.
U.S. Energy Information Administration



Clean Energy Mix

Nearly 75% of the state's power comes from clean, renewable energy sources.
Washington State Department of Commerce



Stellar Education Systems

The Tri-Cities boasts leading K-12, STEM, and vocational high schools and world-class higher education institutions.



Unparalleled Transportation Infrastructure

The local transportation infrastructure delivers ideal distribution and delivery options.



Air

The Port owns two general aviation airports, the Richland Airport and Prosser Airport. A commercial airport, the Tri-Cities Airport, also serves the community.



Roads

Communities in the Port District are served by highways, state routes and interstates connecting markets to the Pacific Northwest.



Rail

The Port owns 16-miles of mainline track served by two Class I railroads.



www.DiscoverRichland.com

DISCOVER
RICHLAND



Pacific Northwest Hub for
Clean Energy
Research & Innovation
Agribusiness



HOME



PROPERTY



INDUSTRY



FACILITIES



LOGISTICS



WORKFORCE



www.DiscoverRichland.com

DISCOVER
RICHLAND



ATKINS



Tucci Energy Services To Install Solar On 300 Acres In North Richland

Clean Energy in the News

- Energy Northwest Involved In Two DOE Small Modular Reactor Projects
- Areva-Framatome Completes \$20M Scrap Uranium Recovery Facility
- Research District Company Partners On New Small Modular Reactor Project
- New Solar Development Planned On 300 Acres In North Richland
- NuScale Receives Approval For Small Modular Reactor Design

40%

STATE ENERGY GENERATED
HERE

97%

CARBON NEUTRAL

73%

HYDROPOWER


9.7M

MEGAWATT-HOURS
GENERATED ANNUALLY



Existing Real Estate Opportunities


PORT OF BENTON[HOME](#) [BUSINESS WITH US](#) [ECONOMIC DEVELOPMENT](#) [REAL ESTATE](#) [ABOUT THE PORT](#) [Q](#)



For Lease


Properties for Lease

The listings below are a collection of the properties or facilities currently for sale or lease in the Port District. If none appear, there are no current sale offerings.



Commercial

2019 Butler Loop
2019 Butler Loop
Richland, WA 99354



Commercial

Battelle Blvd / Horn Rapids Road Industrial
Horn Rapids Road
Richland, WA 99354

Contact

Teresa Hancock
Director of Real Estate

[Email](#)
509.375.3060

LoopNet Listings

Available Properties

For Sale

For Lease



Tourism

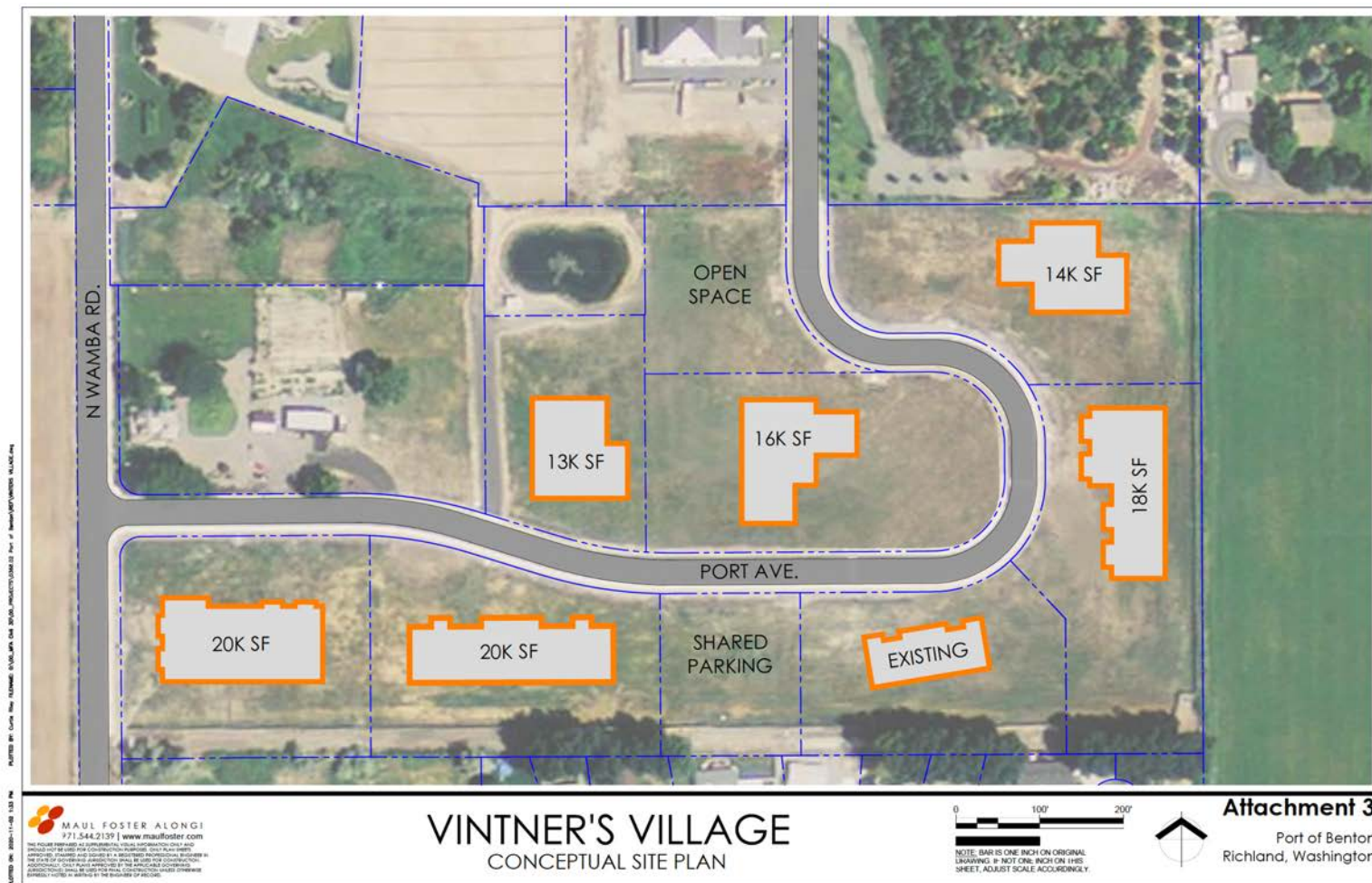
The image shows a screenshot of the Crow Butte Park website. The header includes the Crow Butte Park logo, navigation links (Home, Campsite Reservations, Day Use & Marina Pass, About Crow Butte Park), and a shopping cart icon showing \$0.00. The main banner features a photo of people at a lake with the text "Crow Butte Park" and "Campground, Marina & Park". Below the banner are three yellow buttons: "CAMPGROUND RESERVATIONS", "ACTIVITIES & AMENITIES", and "DAY USE & MARINA PASSES".

Overlaid on the left is a white parking permit with a blue border. The permit text includes "PARKING PERMIT" (vertical), the Crow Butte Park logo, and "CROW BUTTE 2021".

Overlaid on the bottom right is a photo of a man with a beard and a headlamp, sitting inside a large metal manhole. He is holding a white pipe with a valve and a red cable.



Land / Site Planning

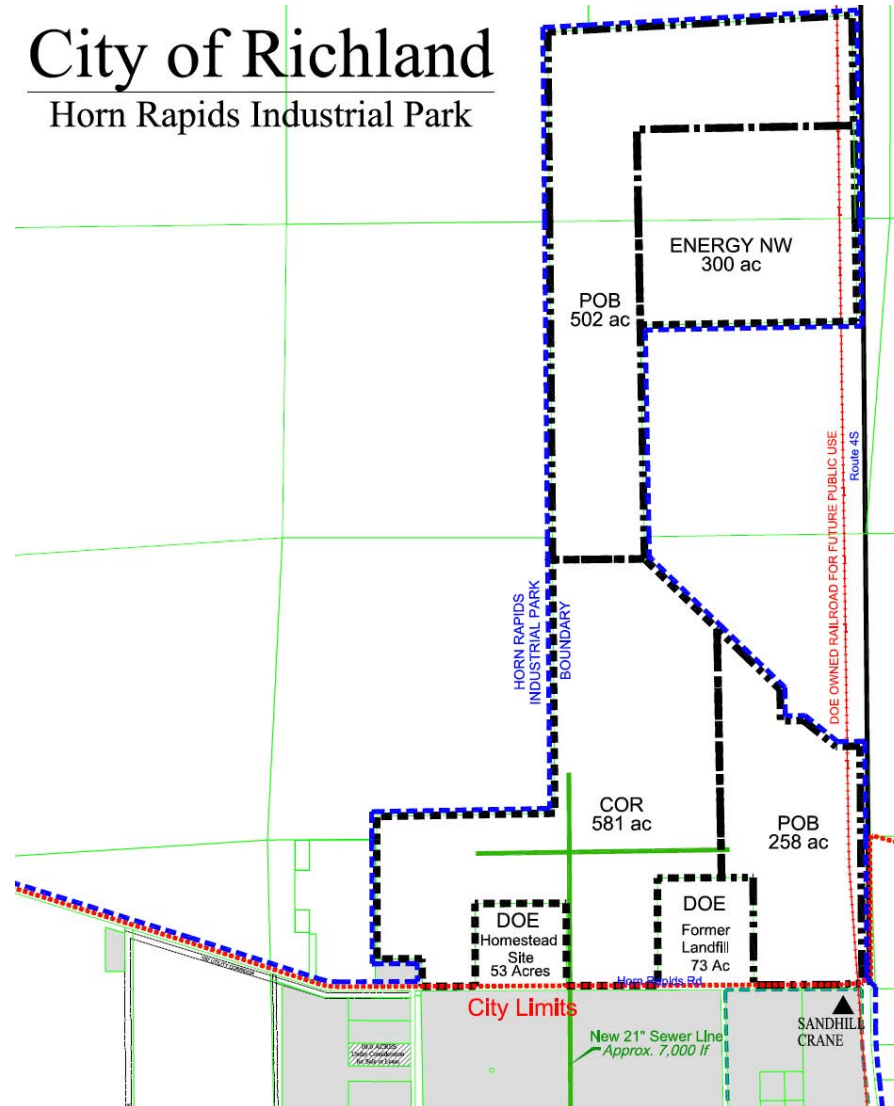






Land / Site Planning

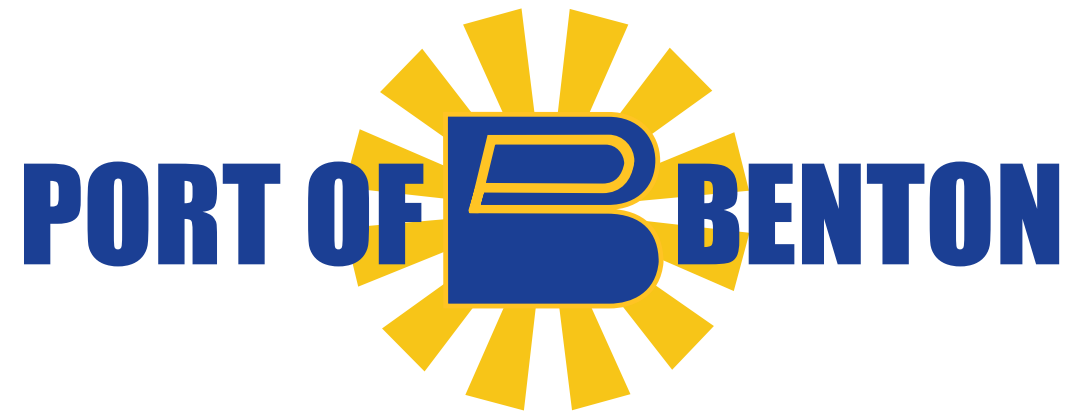
City of Richland Horn Rapids Industrial Park





Development Planning





Thank you!