

Reimann Industrial Center



PORT OF
PASCO

CONNECTING HERE WITH THERE

TRIDEC Economic Outlook

February 20, 2020

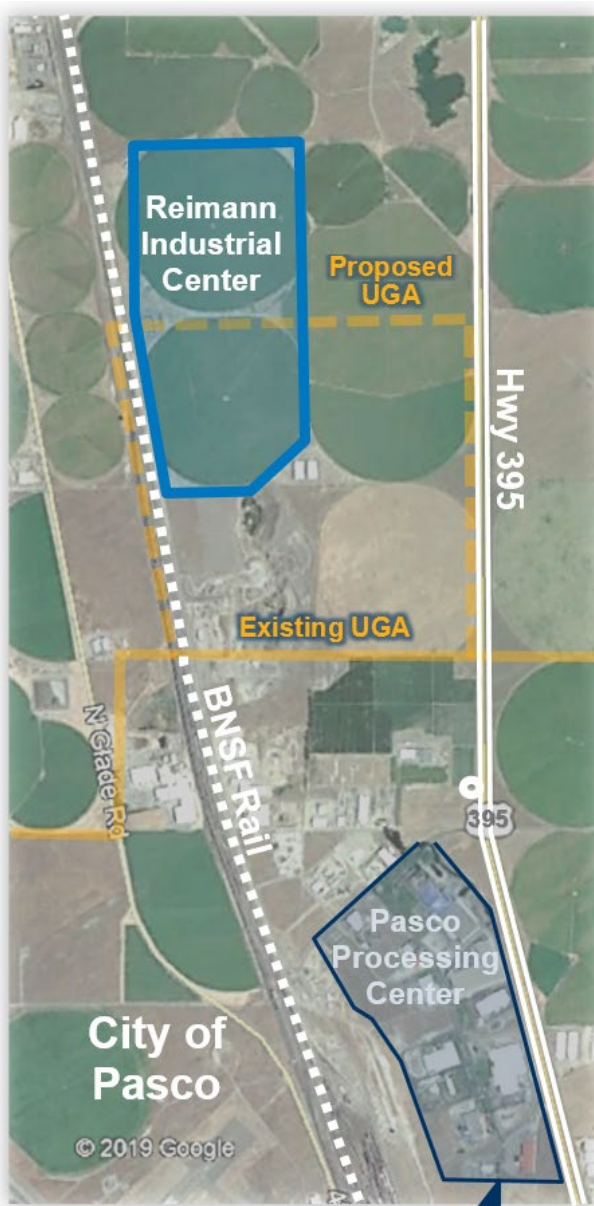
Land Purchase



- 15 Year Search
- ID'd 300 acres not on market
- Land sale closed October 2019
- Zoned industrial by Franklin County
- Portion in City of Pasco UGA Request



Reimann Industrial Center



- **Property assets:** Access to Highway 395 and the BNSF rail network, natural gas and electrical transmission.
- **Vision:** Replicate success of the Pasco Processing Center to create a heavy industrial development to attract food processors and new industry targets.
- **Benefits:** Inject more than \$1.5 million in additional property taxes to benefit schools, local governments and create more than 1,000 new jobs in our region.
- **Challenge:** \$18,000,000 in land and development costs



THANK YOU!



PORT^{OF} PASCO

CONNECTING HERE WITH THERE

GARY BALLEW

Director of Economic Development

Port of Pasco

509-547-3378

www.portofpasco.org

