



THE HANFORD SITE

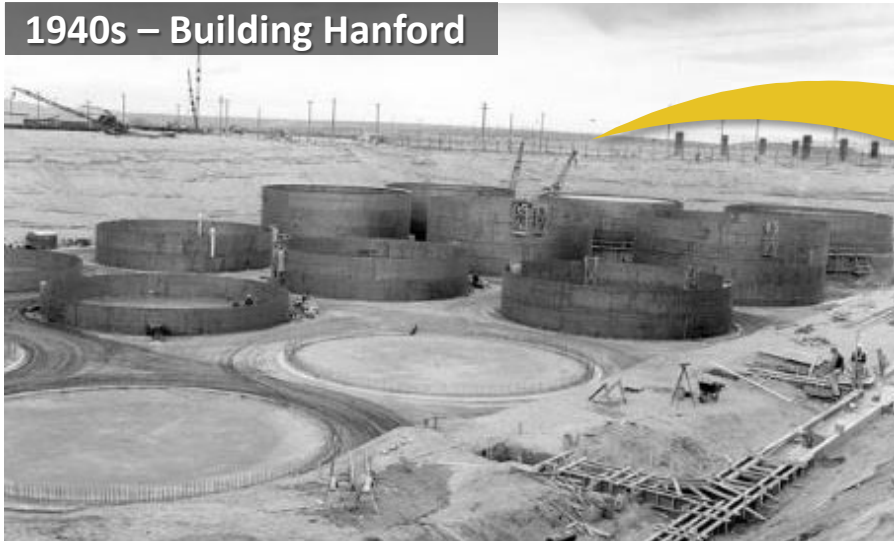
Hanford Site Outlook 21st Annual Tri-Cities Regional Economic Outlook

Brian Vance, Manager,

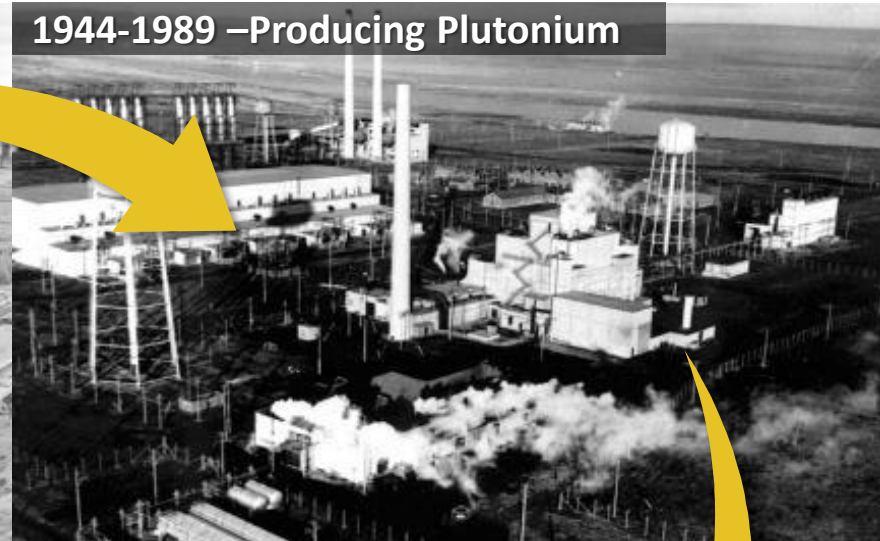
U.S. Department of Energy

Richland Operations Office and Office of River Protection

1940s – Building Hanford



1944-1989 – Producing Plutonium



Present – Shifting Focus to Central Plateau



1990s, 2000s – Cleaning Up Near Columbia River

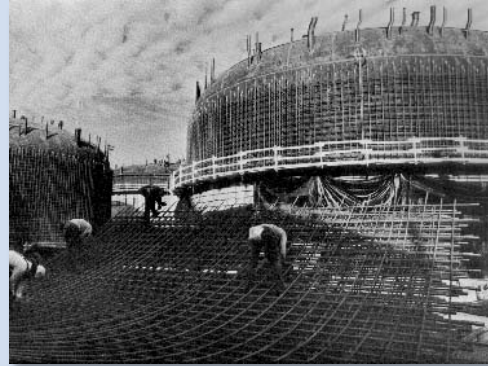


World War II and Post War Era (1944-55)



~6 tons plutonium

Cold War Era (1947-1991)



~68 tons plutonium

Hanford Reactors:

B Reactor 1944-1968
 D Reactor 1944-1967
 F Reactor 1945-1965
 H Reactor 1949-1965
 DR Reactor 1950-1964
 C Reactor 1952-1969
 KW Reactor 1955-1970
 KE Reactor 1955-1971
 N Reactor 1963 -1987

Total: 74 tons plutonium

Two DOE Offices

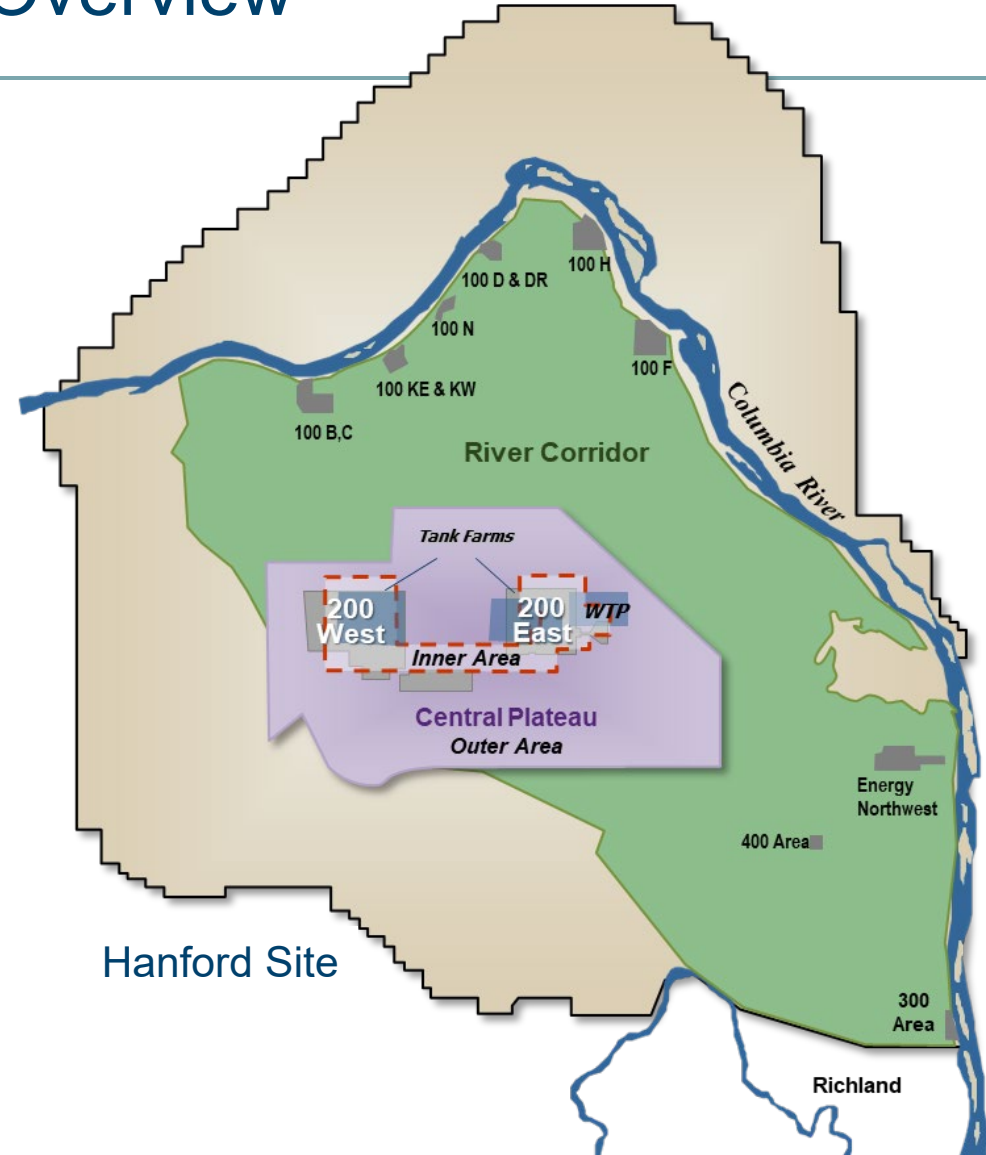
- Office of River Protection
- Richland Operations Office

Three components

- Tank Waste
- Central Plateau
- River Corridor

Cleanup work

- Safely manage & treat tank waste
- Treat contaminated groundwater
- Demolish facilities
- Remove contaminants near the Columbia River





2012



2015

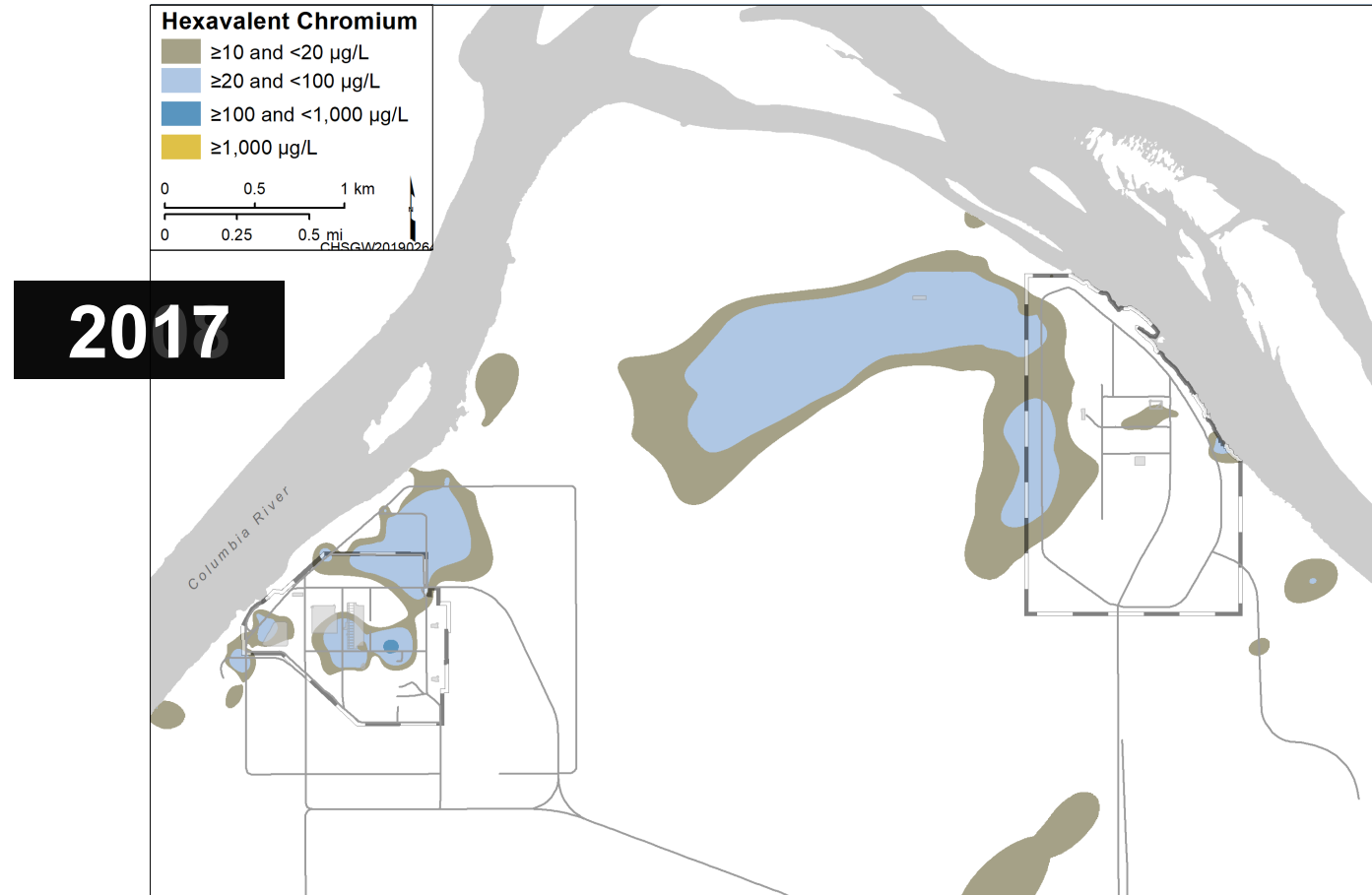


2016



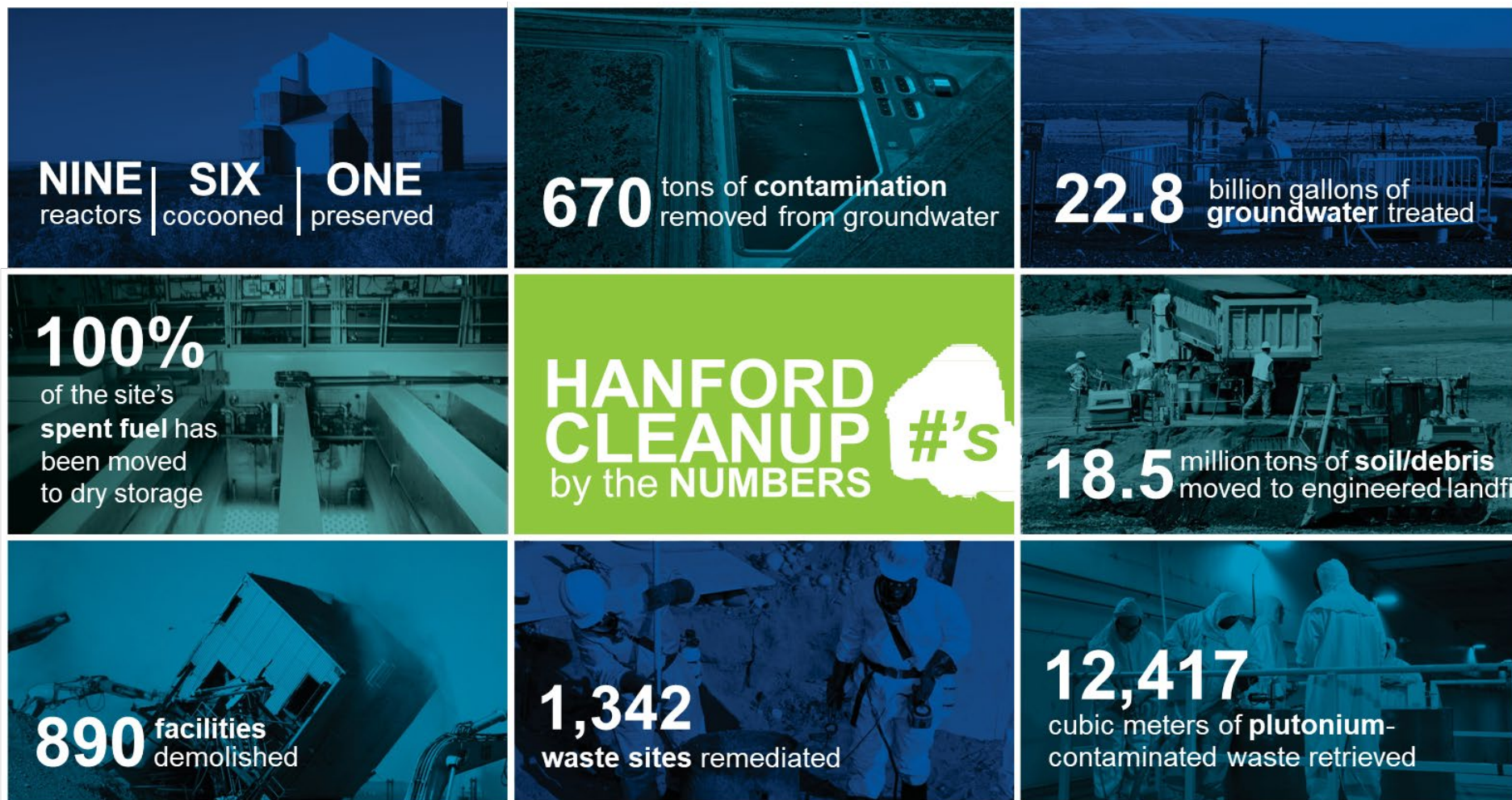
2016

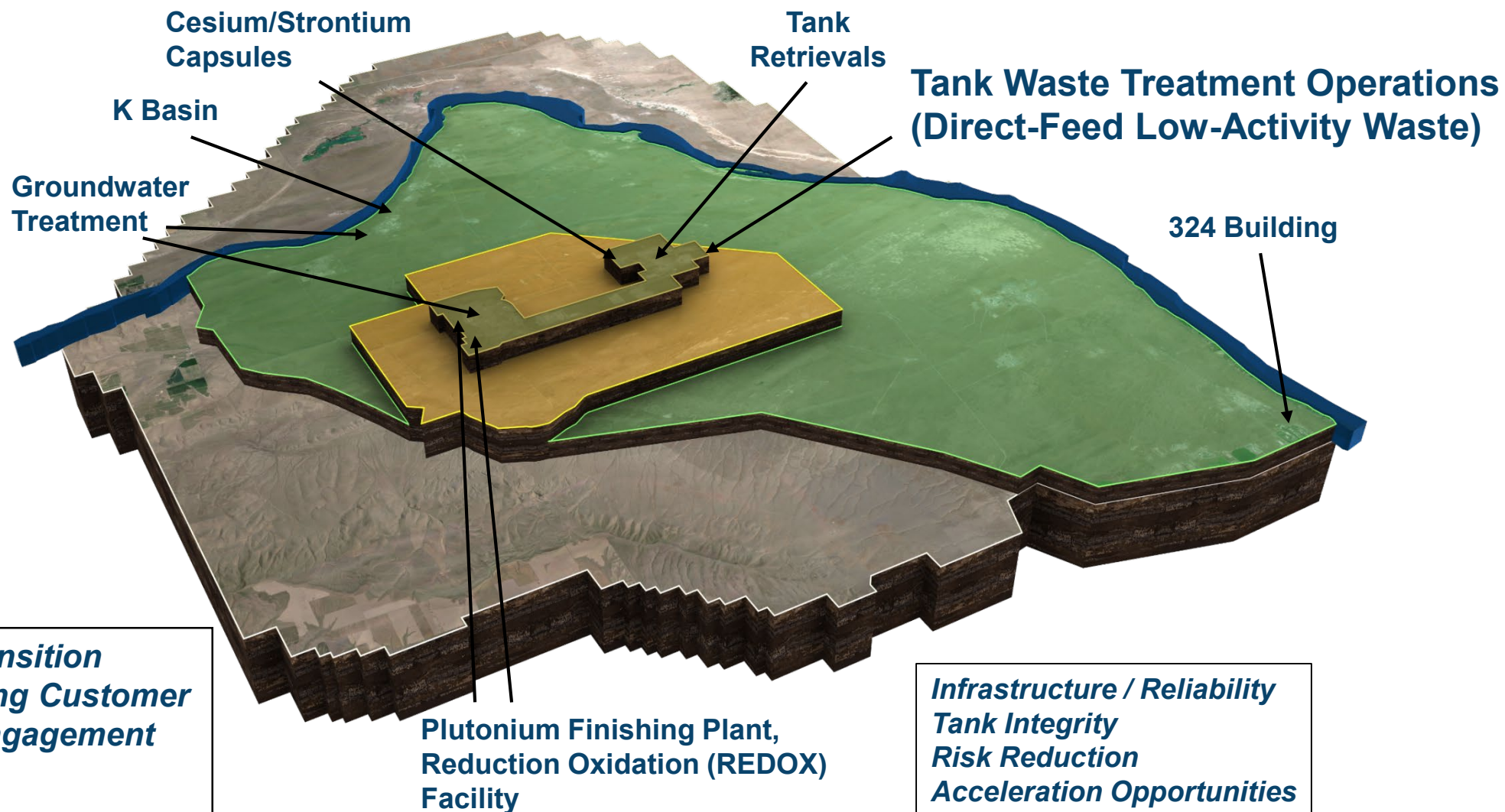
100-H Hexavalent Chromium Remedy Progress



100-K Hexavalent Chromium Remedy Progress

Hanford Cleanup Progress



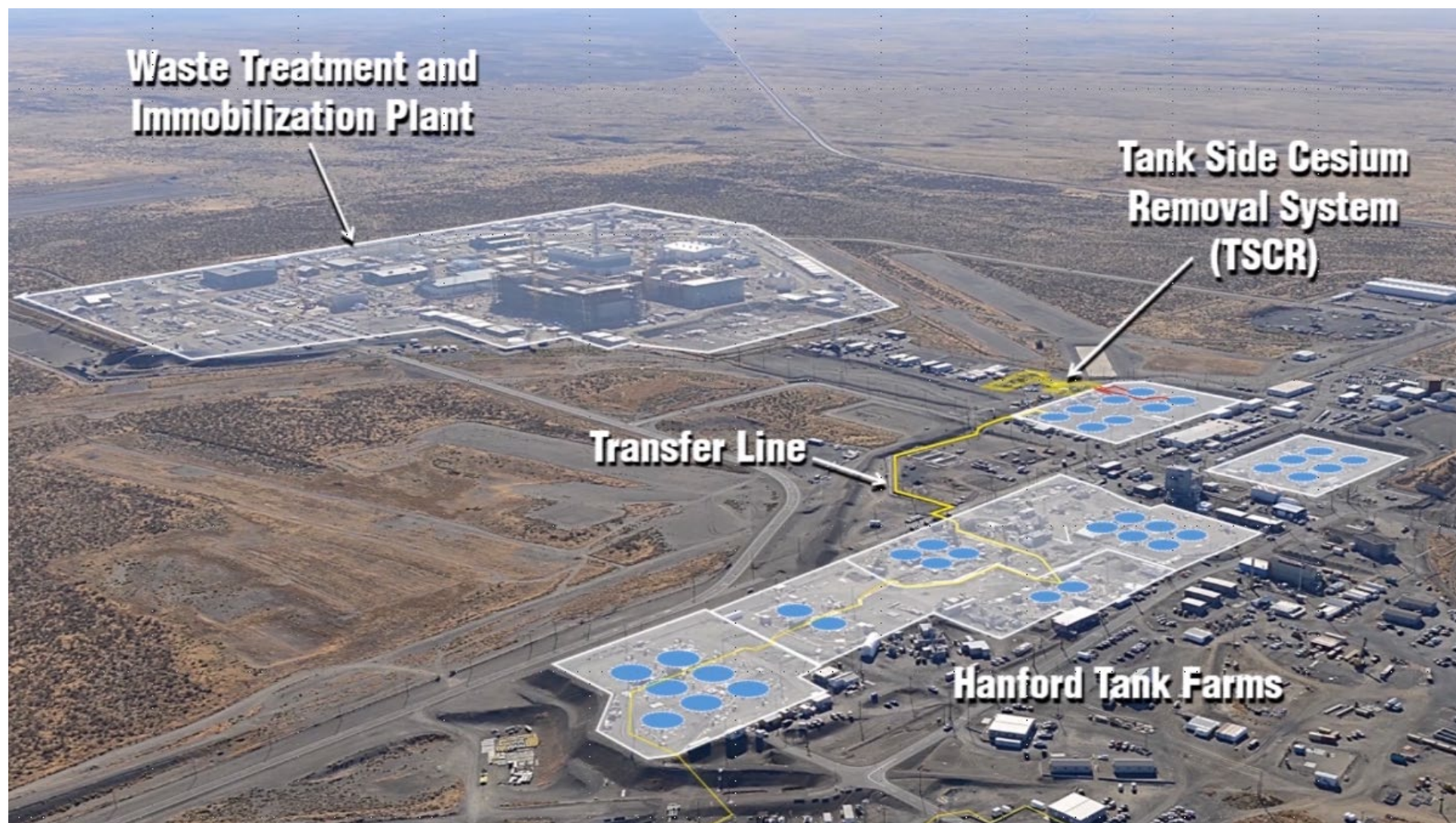


Plutonium Finishing Plant

2020

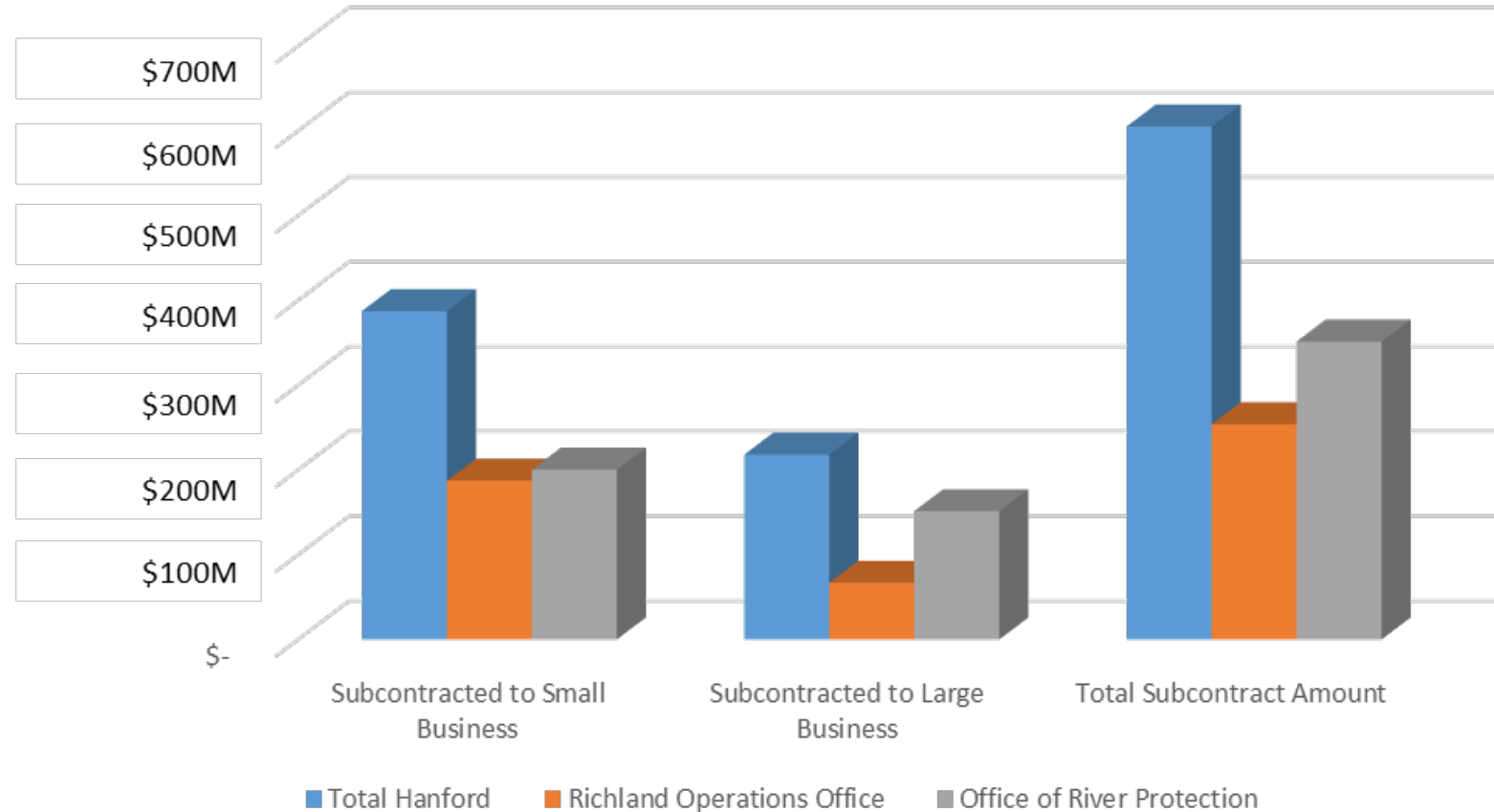


Tank Waste Treatment Operations (Direct-Feed Low-Activity Waste)



- Hanford annual budget ~\$2.4B/year
- Hanford 2020 Budget: \$2.617B
- DOE contractors reported \$604M subcontracting in FY2019
- Over 9,000 workers

CUMULATIVE FY 2019 SUBCONTRACT AWARDS



- Nearly 60 percent of Hanford's workforce is 50 or older
- 35 percent of workforce retirement-eligible within 5 years
- Partnering with area schools & universities
- Hosting annual community forum builds awareness of workforce needs
- Opportunities for professionals and craft members



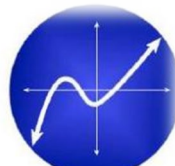
Science



Technology



Engineering



Mathematics



